

Busses

Kokonoemachi Community Bus	...	0973-76-3807
Kusu Kanko Bus	...	0973-72-1131
Kameno Bus	...	0977-23-5179
Sanko Bus	...	096-325-0100
Expressway Bus	...	092-734-2727

Taxis

KC Taxis	...	0973-76-2121
Hato Taxis	...	0973-79-2510

Tourism inquiries

Commerce, Industry, Tourism, and Natural Environment Section, Kokonoe Town	0973-76-3150
Kokonoe Town Tourism Association	0973-73-5505
Kokonoe "Dream" Suspension Bridge Tourist Information Center	0973-73-3800
Chojabaru Visitor Center Information Desk	0973-79-2381



In Kokonoe, Oita Prefecture,
Smells natural, and the sun's warmth is tangible.

Time moves slowly over this peaceful land,
away from the clatter of city life.

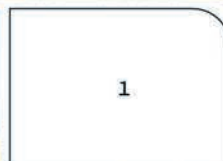
Enjoy a relaxing time and soak in the stunning seasonal scenery
while embracing the beauty of Mother Nature.





Controlled burn

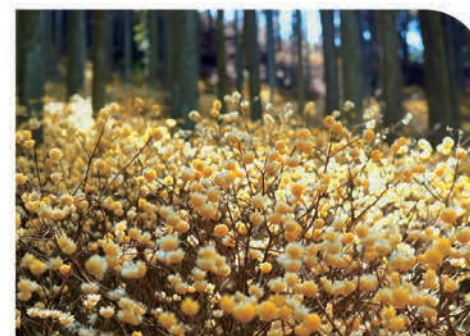
Many local volunteers carry out controlled burns to preserve the landscape and heritage.



- | | |
|---|---|
| 2 | 3 |
|---|---|
1. Controlled burn
 2. Tadewara Wetlands after a controlled burn
 3. Viola orientalis

Black is for spring

In Kokonoe, the four seasons start with the controlled burning of the fields, leaving the earth blackened. The flames spread out, burning away the dead grass and darkening the land. Gradually, the sooty earth begins to sprout a variety of flora, with plants stretching their stems as if competing with each other, heralding the arrival of spring.



The Nogura hamlet Oriental paper brush forest

The oriental paper brush colonies in the cedar grove, about a ten-minute walk from the hamlet among idyllic mountains. The clusters of spherical yellow blossoms are pretty and fantastical and emit a sweet scent.

Where: Matsugi, Kokonoe
When: Mid-March to mid-April
*Please check the flower forecast



Kuju's Kyushu azaleas

Azaleas symbolize Kuju and can be found growing wild in Kyushu's volcanic mountains. The best time to see them is from late May to mid-June, when they turn the mountains a stunning pink. Since you will need to hike the mountains to see them, it is advisable to make a proper hiking plan.

Where: Kokonoe and Taketa
When: Late May to mid-June
*Please check the flower forecast



Spring Events

Opening of Kuju's hiking season

This tradition marks the start of Kuju's season. It takes place alternately at the summits of Kuju and Taisen, where commemorative gifts are distributed.

Where: Kuju Mountains
When: Third Sunday in April



Nashika! Festival

A sake brewery opens its doors to the public to host an event that recreates the ambiance of a traditional village festival. Attendees may have the opportunity to taste the brewery's prized brew.

Where: Yatsushika Brewery,
Migita, Kokonoe
When: Second Sunday in April





Green is for summer

The lush greenery of summer sparkles in the sun and sways coolly in the breeze. The meadows stretch as far as the eye can see, and a gentle breeze blows languidly across them. As the seasons change, flora that have reached their full height become laden with full blossoms in preparation for the peak of summer.



Tadewara Wetlands

One of Japan's largest moors is situated at an elevation of approximately 1,000 meters. The wetlands have wooden boardwalks, allowing visitors to observe rare flora and fauna throughout the four seasons.

Hydrangeas of Takara Hachimangu Shrine

One of Kyushu's best hydrangea viewing spots welcomes visitors with nearly 10,000 hydrangeas on its grounds. During the peak season, water troughs are filled with hydrangea flowers.

Where: Matsugi, Kokonoe
When: Late June to early July



Ryumon Falls

The tiered waterfall has a 26-meter drop and is 40 meters wide. Visitors can enjoy breathtaking views throughout the four seasons, including new greenery and autumnal foliage.

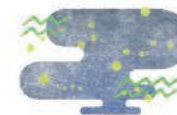
Where: Matsugi, Kokonoe
When: All year



Fireflies of Hosenji Onsen

Fireflies start swarming in late May, creating a fantastical world that draws observers. A firefly festival held around this time attracts numerous tourists.

Where: Machida, Kokonoe
When: Late May to early July



Summer Event



Kuju Festival

An event where you can enjoy Kuju while also discovering the area's unique activities and natural beauty. There will be a variety of stalls selling goods and food, as well as mountain hikes, exhibitions, and interactive booths.

Where: Chojabaru Park, Tano, Kokonoe
When: Early August



Red is for autumn



The mountains are adorned with stunning red hues from the trees.

The skies are clear and high, and the hillsides gleam like a tapestry of gems.

Silvergrass flowers glimmer and sway gently as the air turns cooler with deepening autumn.



Kokonoe "Dream" Suspension Bridge

The bridge is 390 meters long and 173 meters high, spanning a valley at an elevation of 777 meters. It is one of Japan's tallest suspension bridges that provide pedestrian access. Visitors can enjoy stunning views throughout the four seasons, including that of Shindo Falls, listed as one of Japan's 100 best waterfalls.



1

2

1. Kokonoe "Dream" Suspension Bridge
2. Kiju mountains



Silvergrass of Mount Sensui

The meadows are situated at the base of Mount Sensui. The silvergrass flowers swaying in the breeze are sigh-worthy. Take a drive or otherwise explore the Sensui Green Road that connects Chojabaru and Sujiyu Onsen.

Where: Tano, Kokonoe
When: Early October to mid-November



Kyusui Valley

The valley boasts sheer cliffs that stretch for almost 2 kilometers along both banks of the River Kusu. The area offers breathtaking scenery year-round, but the autumn foliage is especially remarkable. Visitors are encouraged to take their time and enjoy the view from the nearby observation platform.

Where: Tano, Kokonoe
When: Late October to mid-November



Yamanami Highway

One of Kyushu's most scenic driving routes offers breathtaking views of the Kiju mountains and stunning natural landscapes. Of particular interest is the Chojabaru area, where visitors can enjoy Kyushu azaleas, new greenery, autumn foliage, and snowy landscapes.

Where: Tano, Kokonoe
When: All year



Autumn Event

Yamakoi Festival

The event is a must-see for outdoor enthusiasts. It offers workshops on outdoor activities, light meals such as curry, booths offering bouldering experiences, and an exhibit of the latest tents from an outdoor equipment manufacturer.

Where: Sensui Camping Village, 204-1, Tano, Kokonoe
When: Late October *Subject to change without notice





Kuju mountains

The mountain range, also known as Kyushu's canopy, includes mountains with elevations of 1,700 meters or higher. Many mountaineers love the mountains for their beautiful Kyushu azaleas in early summer, crimson foliage in autumn, and rimes in winter.



1. Kuju mountains
2. Handa Highlands
3. Kuju mountains

White is for winter

The snow falls silently and accumulates, covering the mountains in pure white. The icy wind bites, and the air is crystal clear. The trees bear ice flowers, creating a landscape reminiscent of a Japanese ink painting. Winter sets in, and the breath expelled turns white in the icy air.



Kuju Forest Park Skiing Grounds

One of the largest ski resorts in Kyushu has a maximum slope of 25 degrees and a total length of 2,500 meters. It offers a variety of courses for both beginners and advanced skiers to enjoy. Additionally, it provides ski rentals and a ski school, making it ideal for beginners and those who have never skied before. The resort is also a great place for families with children, as it features areas designed for sledging and snow play.



Where: 612-1, Yutsubo, Kokonoe
When: Winter



Rimes

Rime is a rare natural phenomenon caused by water droplets freezing on trees in below-freezing temperatures. A beautiful silver landscape unfolds as if ice flowers were in bloom.



Where: Tano, Kokonoe
When: Winter

Winter Event



First opening of Brewery after New Year

During the open-day event at this brewery, visitors can sample in-season junmai sake and other types of sake brewed in the extreme cold. The event features a sales exhibition of freshly pressed raw sake and sake tasting where participants are given individual sake-tasting cups that are only available on this day. This is a must-see event for sake enthusiasts.

Where: Yatsushika Brewery, Migita, Kokonoe
When: Late January



温泉郷 “YUME” onsenkyou

Kokonoe
“YUME” onsenkyou

The town of Kokonoe, located at the foot of the Kuju mountains, is dotted with unique hot springs of varying spring qualities and health benefits. The hot springs, known collectively as Kokonoe Yume Onsenkyou, attract both hot spring devotees and climbers.



1 . Sujiyu Onsen

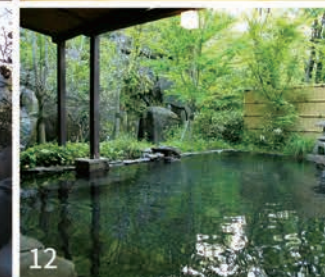
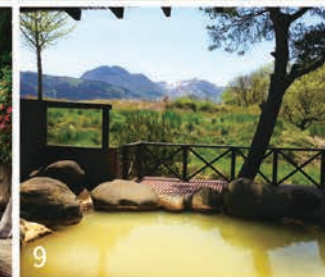
The hot spring resort is named Sujiyu, which means “muscles” in Japanese, because it can relieve muscle stiffness, including backaches and sore shoulders. The Utase Daiyokujo, a public bathhouse located at the heart of the resort, serves as the resort’s symbol.

2 . Ukenokuchi Onsen

This hot spring is characterized by its iron-like smell and yellow, cloudy water. The resort is famous for being the location where literary giant Yasunari Kawabata stayed to write his novel, “Namichidori,” and rustic atmosphere hot spring enthusiasts.

3 . Chojabaru Onsen

The hot spring resort, which has breathtaking views of the mountains, is located near the start of the Chojabaru hiking trail in the Kuju mountain range. It features a variety of spring qualities and attracts climbers and tourists throughout the year.



4 . Kabeyu Onsen

The hot springs inn takes advantage of natural caves. Because the spring water is slightly cooler, ranging from 37 to 38 degrees Celsius, it is best to soak slowly. In the summer, you might be lucky enough to see fireflies whilst bathing.

5 . Kyusuikei Onsen

The hot spring resort in Kyusui valley is well-known for its autumn foliage. Throughout the season, visitors can bathe and enjoy the gorge’s spectacular scenery.

6 . Kan no Jigoku Onsen

A cold spring at approximately 14 degrees Celsius is a rarity in Japan. Why not experience the sensation of “centering” in the renowned cold spring bath and the newly built sauna?

7 . Ryumon Onsen

The hot spring resort is situated near Ryumon Falls, a famous summer sightseeing spot in Kokonoe. Enjoy the soft spring water, which is beneficial for the skin.

8 . Mizuwake Onsen

The hot springs resort is located in a mountain pass. The spring water is sulfurous and feels light against the skin. It is a little-known spot that offers pet baths.

9 . Magoso Onsen

The hot spring resort boasts cloudy, brown spring water that gushes from the heart of Handa Highlands. Guests can enjoy a relaxing bath whilst taking in the stunning vistas of the Kuju.

10. Kawazoko Onsen

Sugawara Michizane visited the historic resort. Hot spring water gushes in abundance from the riverbed, and visitors can bathe whilst listening to the sound of the river.

11. Yutsubo Onsen

The idyllic hot spring resort is nestled among the mountains. It is dotted with dozens of minshuku and ryokan, where visitors can enjoy baths in a natural setting and savor food made with local ingredients.

12. Hosenji Onsen

The tranquil hot spring resort is home to fireflies and Japanese fluvial sculpsins. All of inns offer natural hot spring water that flows freely from the source. The resort is renowned for its abundant spring volume and clear, tasteless, and odorless spring water.

Exciting

Activities in Kokonoe

Horseback Riding Experience

Take a leisurely stroll through the great outdoors while feeling the refreshing breeze of the highlands. Enjoy a luxurious moment that can only be experienced here.



Kokonoe, blessed with natural beauty and nestled among majestic mountains, provides a variety of opportunities to connect with nature. Here are some of the experiences you can have in town!



Camping

The town is dotted with numerous campsites where you can fully experience the great outdoors. These include open camping sites, auto camps, lodges, and campsites with lodges and cabins that serve as a convenient base for hiking and sightseeing.



Mountain climbing

Kokonoe, located at the foot of the Kuju mountain range, is undoubtedly a popular climbing spot. During the Kyushu azalea and autumn foliage seasons, the town bustles with climbers. After climbing, take a relaxing bath in a hot spring to rejuvenate your tired body.



Fruit picking

Kokonoe is blessed with a rich natural environment, offering visitors the chance to pick fruits like Japanese pears and apples. You can eat the fruits on the spot or take them with you to enjoy later. Take full advantage of nature's blessings.

Savor Kokonoe



Kokonoe 'Yume' Pork Domburi

The bowl offers the chance to savor Kokonoe 'Yume' Pork, a brand nurtured by Kokonoe's natural surroundings, alongside local vegetables.



Kokonoe 'Yume' Burger

The local specialty is made using an abundance of fresh ingredients sourced from the town's rich natural environment.



Soft-serve ice cream

Kokonoe is a battleground for soft-serve ice cream. We invite you to sample and compare the various flavors on offer.



Local sake

Local sake is brewed using the pristine water from the Kuju mountains, resulting in a mellow aroma and the rich umami of rice.



Oita Wagyu and Kokonoe 'Yume' Pork

The tender branded meats, Oita Wagyu and Kokonoe 'Yume' Pork, are both excellent! Please give them a try.